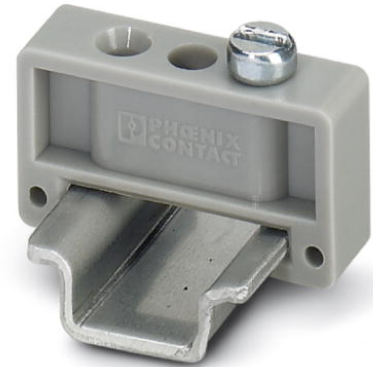


E/MK

Order No.: 1421633

<http://eshop.phoenixcontact.de/phoenix/treeViewClick.do?UID=1421633>

End bracket, width: 6.2 mm, color: gray

Commercial data

EAN	4017918021559
Pack	100 Pcs.
Customs tariff	39269097
Weight/Piece	0.001433 KG
Catalog page information	Page 442 (CL-2005)

Product notesWEEE/RoHS-compliant since:
09/01/2005

<http://www.download.phoenixcontact.com>
Please note that the data given here has been taken from the online catalog. For comprehensive information and data, please refer to the user documentation. The General Terms and Conditions of Use apply to Internet downloads.

Technical data**General**

Length	22 mm
Height	11.4 mm
Width	6 mm
Color	gray
Inflammability class acc. to UL 94	V2

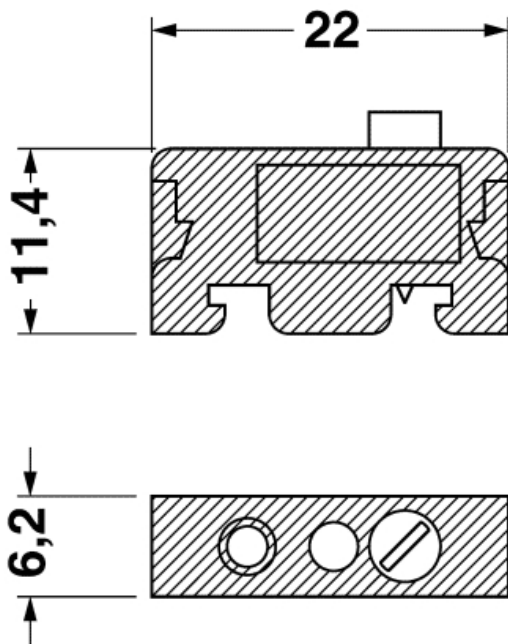
Material	PA
Temperature indices (RTI/TI)	125/100

Accessories

Item	Designation	Description
Assembly		
1401763	NS 15 AL PERF 2000MM	DIN rail, material: Aluminum, perforated, height 5.5 mm, width 15 mm, length: 2 m
1401682	NS 15 PERF 2000MM	DIN rail, material: steel, perforated, height 5.5 mm, width 15 mm, length: 2 m
1401695	NS 15 UNPERF 2000MM	DIN rail, material: Steel, unperforated, height 5.5 mm, width 15 mm, length: 2 m

Drawings

Dimensioned drawing



Address

PHOENIX CONTACT GmbH & Co. KG
Flachsmarktstr. 8
32825 Blomberg, Germany
Phone +49 5235 3 00
Fax +49 5235 3 41200
<http://www.phoenixcontact.de>



© 2008 Phoenix Contact
Technical modifications reserved;